



General

Tug coastal area and Baltic Sea
IMO number

7800485

Dimensions

Length over all 28.42 m
Beam over all 8.50 m
Draught 3.31 m
Gross tonnage 196 tonnes

Engines and propulsion

Main engines 2 x 6FHD240 SWD
Total power 1340 kW
Propulsion 2 x Promac variable pitch propellers
Generators 2 x Volvo Penta

Performance

Bollard pull ahead 28 tonnes
Speed ahead 12 knots

Deck equipment

Towing winch Van der Giesen, IHC DMN,
maximum pull 163 kN on third layer

Tank arrangement

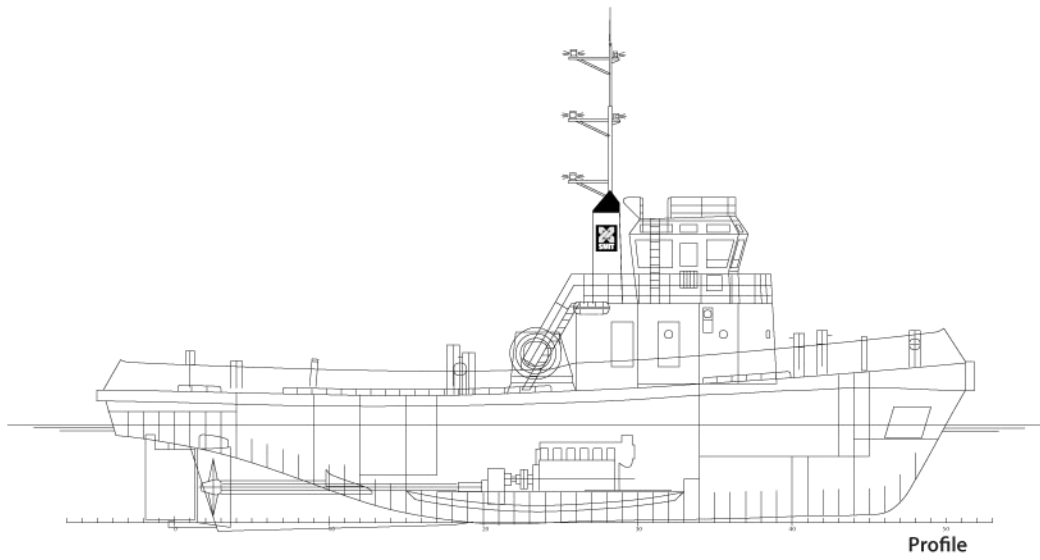
Fuel oil 89 m³
Fresh water 14 m³

Nautical and communication equipment

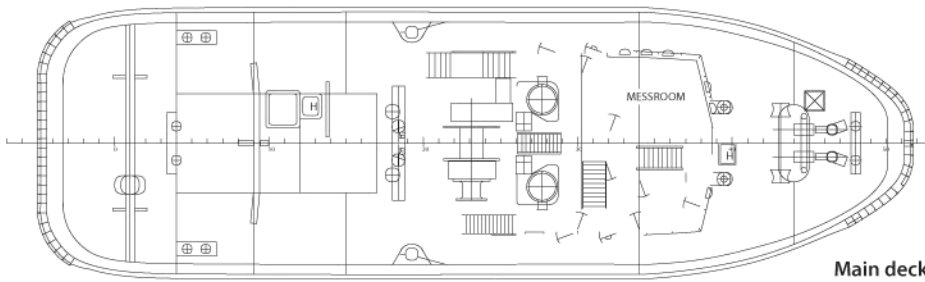
Radar Furuno RHRS 2001 R
Compass Observator
GPS MLR Valsat 02L
Echosounder Simrad
VHF Sailor RT 2048
VHF portable Nova Marine RT 16
Navtex JRC NCR 300A

Accommodation

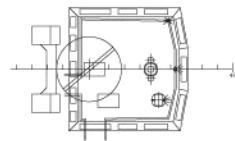
Accommodation for 6 people, fully air-conditioned.



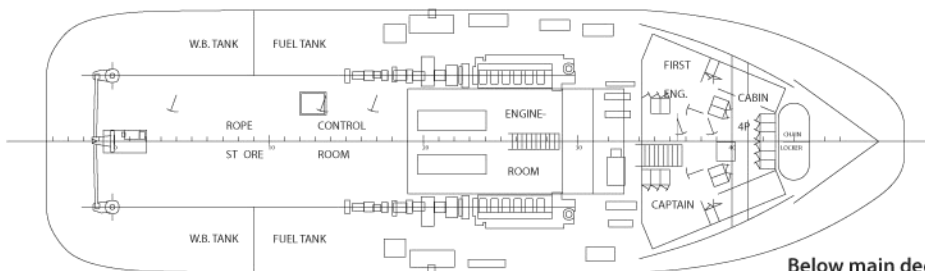
Profile



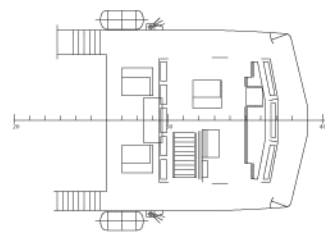
Main deck



Top deck



Below main deck



Bridge deck

GENERAL PLAN JACOB

All details are believed to be correct but not guaranteed.